

tecRaman Probe: Multipurpose Solution for Raman Spectroscopy

The tecRaman Probe for Raman spectroscopy combines flexibility and maximum performance in a compact and process-proven housing. It is characterized by straight-forward operation and maximum adaptability to match multiple applications. Its key features are a highly flexible optical path with 25 or 50 mm standard focal. The Remote Raman Probe can be used to measure solids or liquids in mobile or stationary applications. Its special design enables the direct measurement of samples

and process applications like the measurement of materials through inspection glasses or even in flow-through cells. The available tec5 Raman Measurement Box even allows measurements with Laser Safety Class 1 conditions. The combination of a MultiSpec® Raman system, the process-proven software MultiSpec® Pro II and the tecRaman Probe presents a complete solution for Raman spectroscopy either in a laboratory or in process lines.

[Applications in Process or Laboratory]

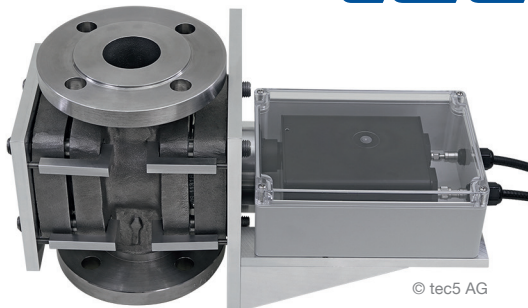
- Chemical
- Pharmaceutical
- Geological
- Semiconductors
- Forensics
- Biological
- Nanomaterials
- Polymers



© tec5 AG

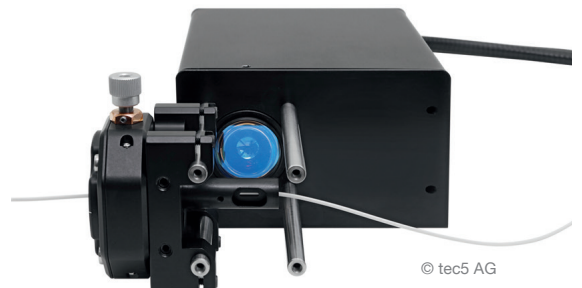
[tecRaman Probe 785 Cuvette]

tecRaman



© tec5 AG

[tecRaman Probe 785 Process DN 50]



© tec5 AG

[tecRaman Probe 785 Tube]

[tecRaman Probe | Features]

- High efficiency
- Measurement of solids and liquids
- Process version for adaption to DN 50 flanges
- Laboratory version with cuvette holder for standard cuvettes
- Laboratory version with holder for PTFE tubing
- Compact and robust housing
- For stationary or mobile use
- FC/PC [Laser] and SMA [Detection] connections for optical fibers

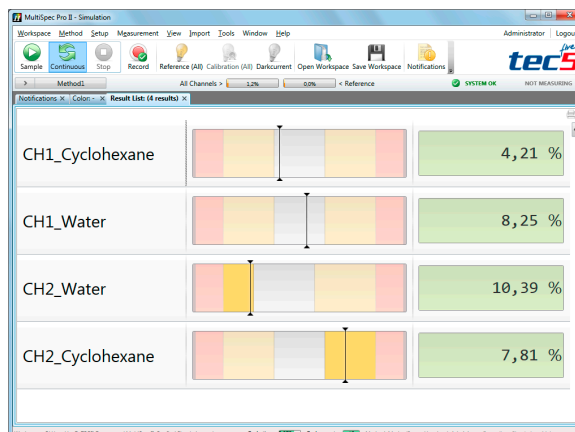
[MultiSpec® Raman Spectrometer | Features]

- Raman analyzer for process applications
- Temperature-stabilized diode Laser with 50 – 500 mW power
- Scientific grade CCD Detector
- Range of 300 to 3100 cm⁻¹
- MultiSpec® Pro II Raman process software
- Support of process interfaces and chemometric data analysis
- 19" rack-mount standard
- Various IP-protected housings available

Accessories [tecRaman Probe]

[MultiSpec® Pro II Process Software]

MultiSpec® Pro II is an improved new software bundle for laboratory and process applications. Incorporating current program environments and visualization schemes, a number of data acquisition modes, data processing and output options are provided. Five packages are offered, which range from a basic data acquisition tool to a process software, including status information and user management. Optional modules, including color determination, prediction of chemometric models and a number of process communication interfaces facilitate the adaption to required applications. The software package supports all tec5 spectrometer systems and electronics.



[MultiSpec® Pro II Result View]

[Available Configurations]

Accessory	Description	Article Number
Raman Box	Measurements in an aluminum box which provides Laser Class 1	11-1159300-01
tecRaman Probe 785	Basic configuration with f=25mm	11-1159050-00
tecRaman Probe 785 Cuvette	tecRaman Probe 785 with cuvette holder for standard cuvettes	11-1159080-00
tecRaman Probe 785 Tube	tecRaman Probe 785 with holder for 1/16" PTFE tube	11-1159080-010
Additional Tube Holder	For tecRaman Probe 785 tube	11-1159060-11
tecRaman Probe 785 Process DN 50	tecRaman Probe 785 for the use on DN 50 process inspection windows	11-1159070-00
Additional accessories available on request		

[Technical Data]

Probe Material	Anodized aluminum
Focal Plane	25 mm, 50 mm
Length of Fibers	2 m [standard], other lengths available on request
Connectors	FC/PC [Laser], SMA [Detection]
Operating Temperature	5 – 45 °C standard temperature range [contact tec5 for additional range]
Weight	1.75 kg
Dimensions [W x H x D]	100 x 60 x 140 mm

tec5_3004_PI_Accessories_tecRaman_Probe_e_2018[06



Headquarters
tec5 AG | In der Au 27
 61440 Oberursel, Germany
 P. +49.(0)6171.97 58-0
 sales@tec5.com | www.tec5.com